

Angiotensinogen ELISA Kit

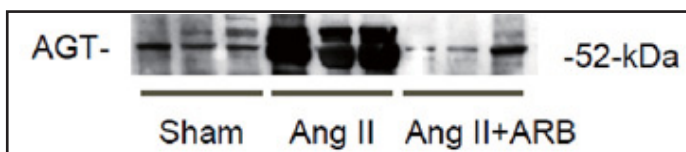
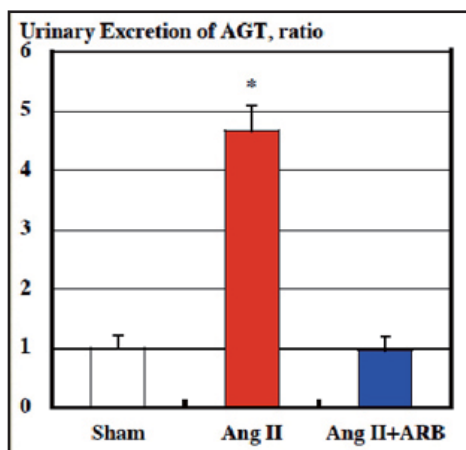
The critical role of the circulating renin-angiotensin (RA) system in blood pressure regulation and fluid and electrolyte homeostasis has been recognized for many years. Angiotensin II (All) is the most powerful biologically active product of the RA system, and angiotensinogen is the only known substrate for All.

In recent years, the focus of interest on the RA system has shifted to a main emphasis on the role of the local/tissue RA system in specific tissues. Emerging

evidence has demonstrated the importance of the tissue RA system in the brain, heart, adrenal glands, vasculature as well as the kidneys.



Enhanced Urinary Angiotensinogen in Angiotensin II-Dependent Hypertension is Blocked by ARB - Kobori H et al, Hypertension, 2004



Kobori et al. have shown that intrarenal angiotensinogen as well as All is augmented in All-infused hypertensive rats via an AT1 receptor-dependent mechanism. At the same time, they strongly propose that the urinary angiotensinogen excretion rate can be a potential biomarker of the local activity of the intrarenal RA system.

Angiotensinogen ELISA Kits

Code No.	Name			Volume	Assay Range	Application
27412	Human	Total Angiotensinogen	Assay Kit - IBL	96 Well	0.31 ~ 20 ng/mL (6.0 ~ 384.6 pmol/L)	EDTA-Plasma, Serum Urine, Cell culture supernatar
27413	Mouse	Total Angiotensinogen	Assay Kit - IBL	96 Well	0.16 ~ 10 ng/mL (3.1 ~ 192.3 pmol/L)	EDTA-Plasma, Serum Urine, Cell culture supernatar
27414	Rat	Total Angiotensinogen	Assay Kit - IBL	96 Well	0.08 ~ 5.0 ng/mL (1.5 ~ 96.2 pmol/L)	EDTA-Plasma, Serum Urine, Cell culture supernatar
27412D100	Human	Angiotensinogen	EIA buffer 100	100 mL	-	For 27412
27413D100	Mouse/ Rat	Angiotensinogen	EIA buffer 100	100 mL	-	For 27413 / 27414

Manufacturer :
Immuno-Biological Laboratories Co., Ltd.

E-mail: do-ibl@ibl-japan.co.jp
URL: <http://www.ibl-japan.co.jp>





Polyclonal Antibody



Monoclonal Antibody



Assay Kit

Angiotensinogen
(AGT)

Signal peptid

DRVYIHPFHLVNIHNE

ACE

Renin

AGT mature type

DRVYIHPFHLVNIHNE

Angiotensin I

DRVYIHPFHL

Angiotensin II

DRVYIHPF

Angiotensinogen ELISA Kits



Human



27412



Mouse



27413



Rat

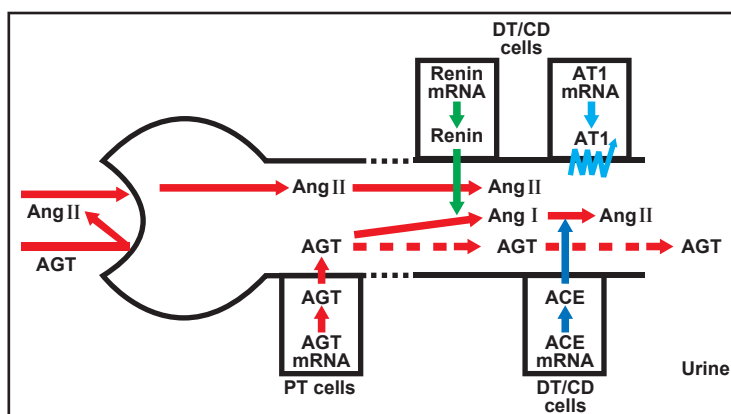
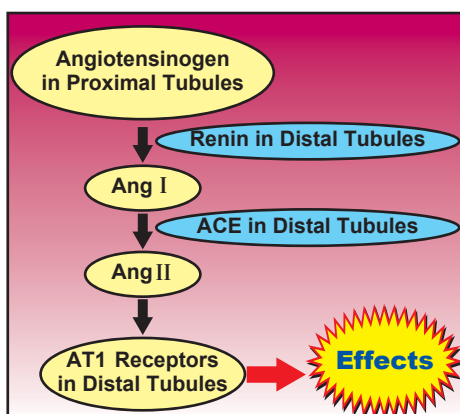


27414



Tissue/Local Renin-Angiotensin System in Kidney

- Kobori H et al, Pharmacol Rev, 2007



Reference:

1. Kobori H, Harrison-Bernard LM, Navar LG. Expression of angiotensinogen mRNA and protein in angiotensin II-dependent hypertension. J Am Soc Nephrol. 2001 Mar;12(3):431-9.
2. Kobori H, Harrison-Bernard LM, Navar LG. Enhancement of angiotensinogen expression in angiotensin II-dependent hypertension. Hypertension. 2001 May;37(5):1329-35.
3. Kobori H, Harrison-Bernard LM, Navar LG. Urinary excretion of angiotensinogen reflects intrarenal angiotensinogen production. Kidney Int. 2002 Feb;61(2):579-85.
4. Kobori H, Nishiyama A, Harrison-Bernard LM, Navar LG. Urinary angiotensinogen as an indicator of intrarenal Angiotensin status in hypertension. Hypertension. 2003 Jan;41(1):42-9.
5. Kobori H, Prieto-Carrasquero MC, Ozawa Y, Navar LG. AT1 receptor mediated augmentation of intrarenal angiotensinogen in angiotensin II-dependent hypertension. Hypertension. 2004 May;43(5):1126-32.
6. Katsurada A, Hagihara Y, Miyashita K, Satou R, Miyata K, Ohashi N, Navar LG, Kobori H. Novel sandwich ELISA for human angiotensinogen. Am J Physiol Renal Physiol. 2007 Sep;293(3):F956-60.
7. Kobori H, Nangaku M, Navar LG, Nishiyama A. The intrarenal renin-angiotensin system: from physiology to the pathobiology of hypertension and kidney disease. Pharmacol Rev. 2007 Sep;59(3):251-87.